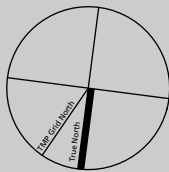
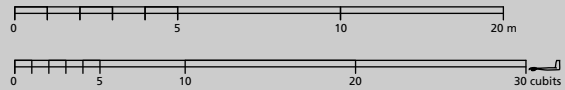
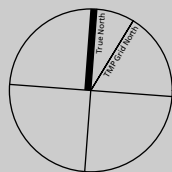
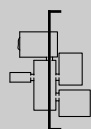
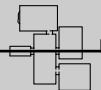
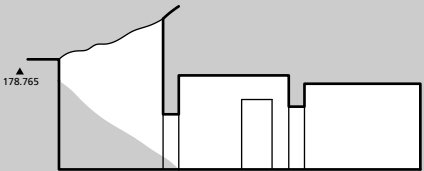
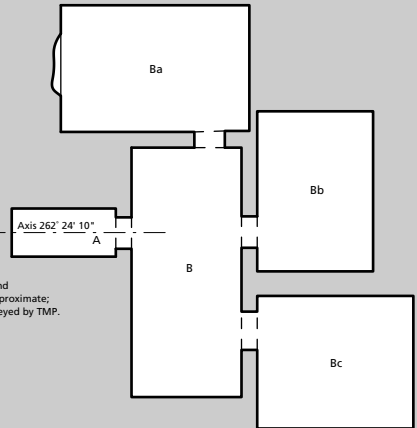


NOTES  
 1 Unexcavated gate.



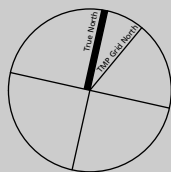
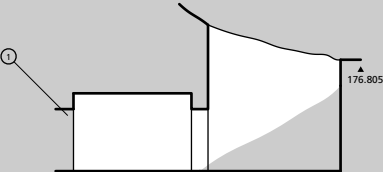
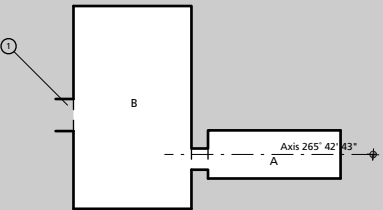
**KV 27**

N 99,605.516  
 E 94,245.470  
 Elev 178.765  
 Coordinates and dimensions approximate; tomb not surveyed by TMP.



**KV 28**

N 99,613.145  
 E 94,244.273  
 Elev 176.805  
 Coordinates and dimensions approximate; tomb not surveyed by TMP.



**KV 29**

Axis 77' 23' 11"  
 Coordinates not available; dimensions approximate; tomb not surveyed by TMP.



**KV 27, 28, 29**  
 Plans, sections 1:125  
 Dyn. XVIII



Theban Mapping Project  
 Sheet 46/72 - KV 27, 28, 29 (1/1)